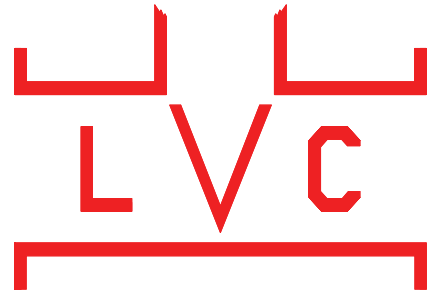


LINED VALVE COMPANY, INC.

Fabricated Large Diameter Knife Gate Valves

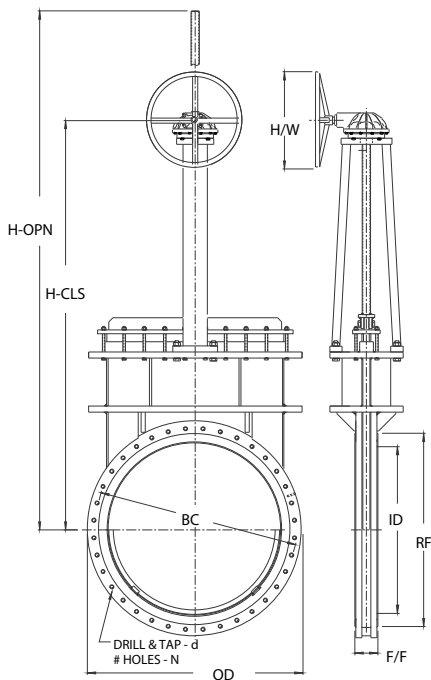
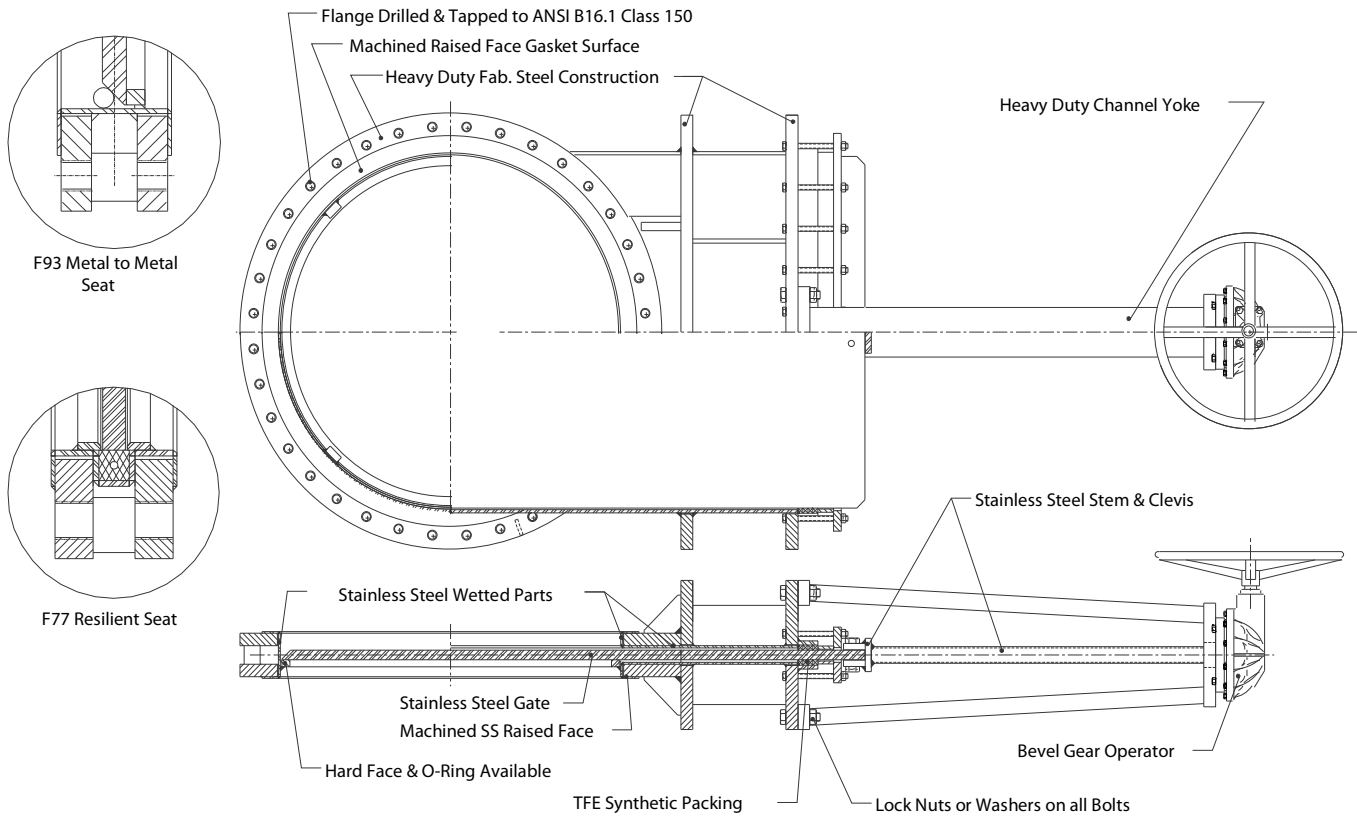


FEATURES



- Offered in our series F93 and F79
- Fabricated carbon steel body flanges, packing gland and yoke.
- All Stainless steel construction available
- Fabricated stainless steel liner
- Stainless steel gate
- Stainless steel metal to metal seat Fig. F93
- Bi-directional resilient seat Fig. F79
- Heavy duty designed body to resist deflection from line loads and internal pressure.
- Valves are designed for 50 PSI or 125 PSI CWP pressure rating
- Other pressure ratings available
- Fig. F93's seat configuration and beveled gate designed to provide shut-off capability in thick media such as pulp stock, slurries, or with solid media such as pellets or powders.
- Heavy fabricated steel yoke will not bend or twist under extreme loads.
- Easy conversion from handwheel operator to cylinder, bevel gear or electric motor operator using existing yoke.
- Enclosed brass stem bushing provides reduced operating torque and protection of the stem bushing from harsh environments.
- O-Ring resilient seat available Fig. F93
- Precision machined stainless steel gate for superior seating capability.
- Stainless steel stem for corrosion resistance.
- Sizes include 30", 36", 42", 48", 54", 60" or larger
- Bonneted (Fig 193) versions are also available

LINED VALVE COMPANY, INC FABRICATED STEEL KNIFE GATE VALVE—FIG F77 & F93



DIMENSIONS:

	VALVE SIZE									
	30"	30"	36"	36"	42"	42"	48"	48"	54"	60"
ID	28"	28"	33-3/4"	33-3/4"	40-1/2"	40-1/2"	46-1/2"	46-1/2"	52-1/2"	28-1/2"
F/F	4"	4-5/8"	5"	5-3/4"	5-5/8"	6-1/4"	6-1/8"	7"	6-5/8"	7"
BC	36"	36"	42-3/4"	42-3/4"	49-1/2"	49-1/2"	56"	56"	62-3/4"	69-1/4"
RF	33-3/4"	33-3/4"	40-1/4"	40-1/4"	47"	47"	53-1/2"	53-1/2"	59-1/2"	66"
OD	38-3/4"	38-3/4"	46"	46"	53"	53"	59-1/2"	59-1/2"	66-1/4"	73"
N	28	28	32	32	36	36	44	44	44	52
d	1-1/4"-7	1-1/4"-7	1-1/2"-6	1-1/2"-6	1-1/2"-6	1-1/2"-6	1-1/2"-6	1-1/2"-6	1-3/4"-5	1-3/4"-5
H/W	24"	24"	24"	24"	36"	36"	36"	36"	36"	36"
H-CLS	74-3/4"	74-3/4"	89-1/8"	89-1/8"	97-1/4"	97-1/4"	110"	110"	123"	135"
H-OPN	104"	104"	121"	121"	136"	136"	155"	155"	173"	189"
PRESSURE RATING	50 PSI	125 PSI	50 PSI	125 PSI	50 PSI	125 PSI	50 PSI	125 PSI	50 PSI	50 PSI

MATERIALS:

	MATERIAL CODE				
	W44	A44	W66	A66	A77
BODY, SEAT* & RF	304	304	316	316	317
GATE	304	304	316	316	317
PACKING GLAND	STEEL	304	STEEL	316	317
FLANGES, EXT TRIM	STEEL	304	STEEL	316	317
YOKE	STEEL	304	STEEL	316	317
STEM & CLEVIS	304	304	304	304	304
STEM BUSHING	BRASS	BRASS	BRASS	BRASS	BRASS
BOLTING	PLATED	304	PLATED	304	304
PACKING	TFE/SYN	TFE/SYN	TFE/SYN	TFE/SYN	TFE