

VAL-MATIC®

SEWAGE COMBINATION AIR VALVE

**Single housing design
reduces cost...height...
weight...and maintenance!**

**Exclusive Val-Matic features provide
efficiency, dependability and extended life.**

1. FULL FLOW AREA

Inlet and outlet ports equal pipe area for maximum air flow efficiency and forcemain protection.

2. ADJUSTABLE ORIFICE BUTTON

The final touch that assures positive seating.

3. STAINLESS STEEL TRIM

Dependability and durability are provided as a result of greater strength, wear, and corrosion resistance.

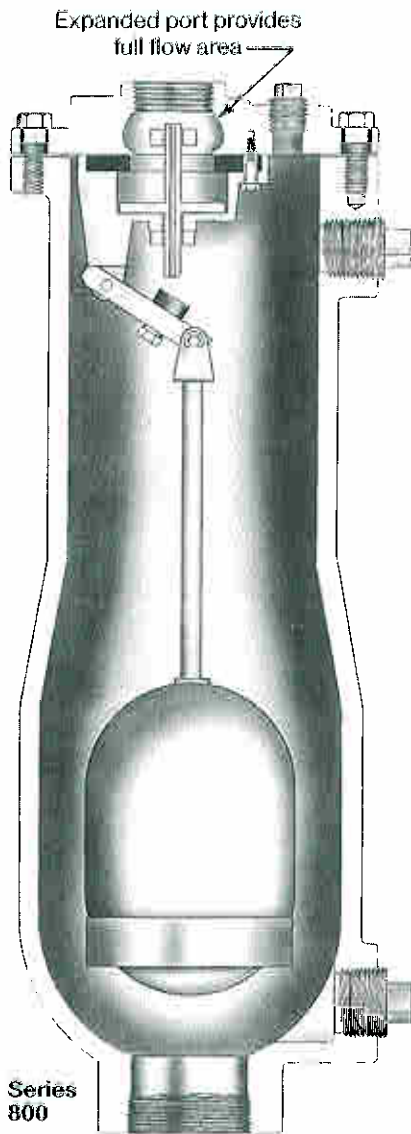
4. FLOW SENSITIVE FLOAT

Performance proven for over 15 years! The all stainless steel float with sensitivity skirt, responds to sudden in rush of sewage, raising float quickly, minimizing upper valve chamber contamination and valve spurling, thus reducing back wash requirements.

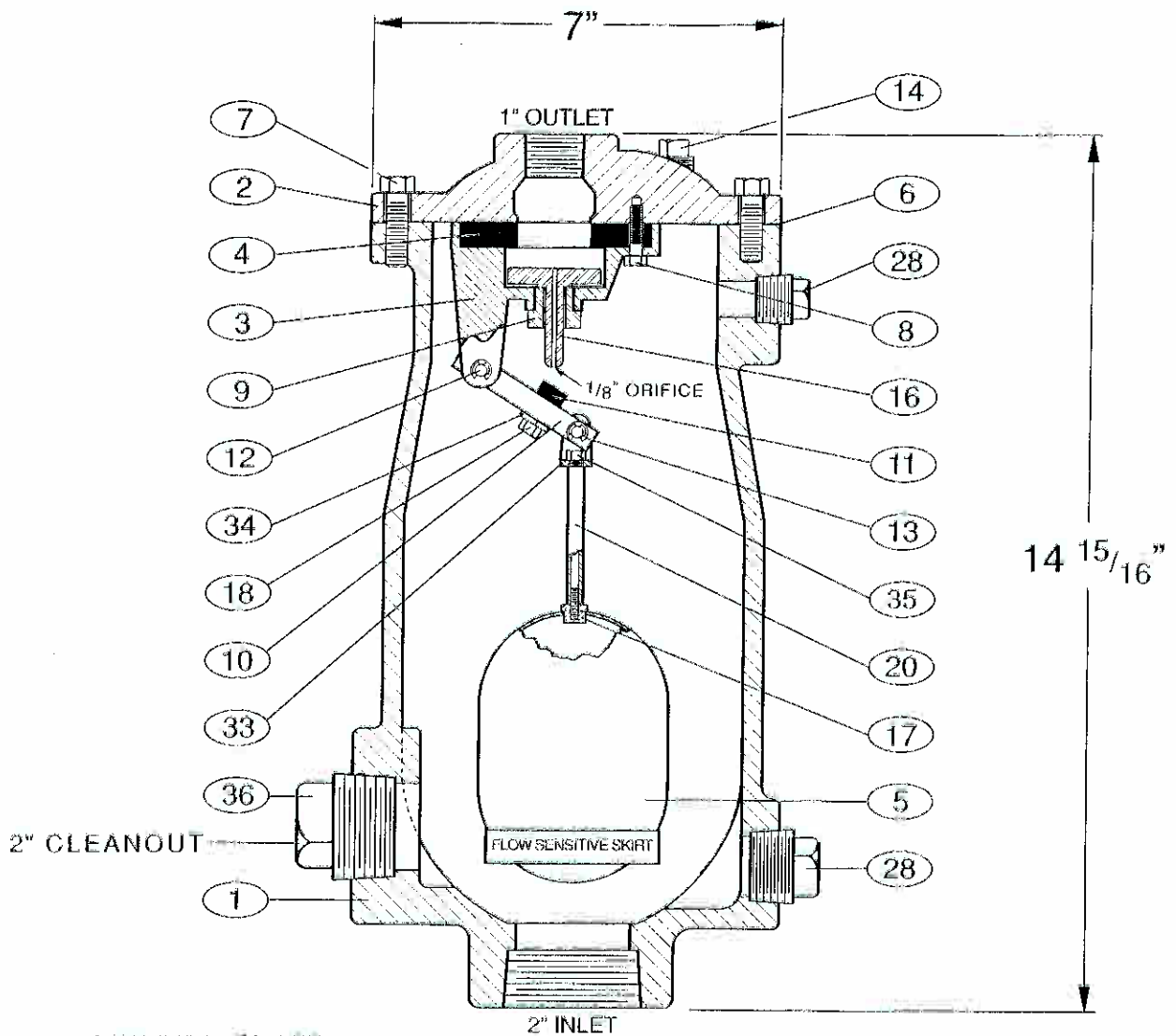
5. GLOBE BOTTOM BODY

Increases float clearance, reducing potential for clogging and float lock-up.

6. UNCONDITIONALLY GUARANTEED STAINLESS STEEL FLOAT.



The new Sewage Combination Air Valve provides both air release and air/vacuum protection in a new short single housing design, with exclusive features found *only* VAL-MATIC VALVES!



WORKING PRESSURE
 150 P.S.I. COLD WORKING PRESSURE-C.W.P.
 TEST PRESSURE
 1.5 TIMES COLD WORKING PRESSURE-C.W.P.

- | | | |
|--------------------|--------------------|--------------------------|
| 1. BODY | 9. BUSHING | 18. LOCK NUT |
| 2. COVER | 10. FLOAT ARM | 20. GUIDE SHAFT |
| 3. BAFFLE | 11. ORIFICE BUTTON | 28. PIPE PLUG |
| 4. SEAT | 12. PIVOT PIN | 33. CLEVIS |
| 5. FLOAT | 13. RETAINING RING | 34. LOCK WASHER |
| 6. GASKET | 14. PIPE PLUG | 35. GUIDE SHAFT RETAINER |
| 7. COVER BOLT | 16. PLUG | 36. PIPE PLUG |
| 8. RETAINING SCREW | 17. FLOAT RETAINER | |

Contact us for more information: Valve & Equipment Consultants, Inc. • Phone: 281-324-1500 • Email: sales@valveandequipment.com

Website: www.ValveAndEquipment.com

WASTEWATER COMBINATION AIR VALVE

DATE 3-17-00

VAL-MATIC[®]

VALVE AND MANUFACTURING CORP.

DRWG. NO.

VM-801A

WASTEWATER COMBINATION AIR VALVE

SERIES NO. 801A

STANDARD MATERIALS OF CONSTRUCTION

<u>PART NO.</u>	<u>PART NAME</u>	<u>MATERIAL</u>
1	BODY	CAST IRON ASTM A126, CLASS B
2	COVER	CAST IRON ASTM A126, CLASS B
3	BAFFLE (1"-2") BAFFLE (3"-4")	CAST IRON ASTM A126, CLASS B DUCTILE IRON ASTM A536, GRADE 65-45-12
4	SEAT	BUNA-N
5	FLOAT	STAINLESS STEEL T304, ASTM A240
6	GASKET	COMPRESSED NON-ASBESTOS FIBER
7	COVER BOLT	ALLOY STEEL SAE, GRADE 5
8	RETAINING SCREW	STAINLESS STEEL T304, ASTM F593
9	GUIDE BUSHING	STAINLESS STEEL T303, ASTM A582
10	FLOAT ARM	STAINLESS STEEL T303, ASTM A582
11	ORIFICE BUTTON	STAINLESS STEEL & BUNA-N
12	PIVOT PIN	STAINLESS STEEL T304, ASTM A276
13	RETAINING RING	STAINLESS STEEL PH 15-7 MO
14	PIPE PLUG	STEEL
16	PLUG	STAINLESS STEEL T304, ASTM A276
17	FLOAT RETAINER	STAINLESS STEEL T304, ASTM F880
18	LOCK NUT	STAINLESS STEEL T304, ASTM A594
20	GUIDE SHAFT	STAINLESS STEEL T303, ASTM A582
28	PIPE PLUG	STEEL
33	CLEVIS	STAINLESS STEEL T304, ASTM A240
34	LOCK WASHER	STAINLESS STEEL T304, ASTM A240
35	GUIDE SHAFT RETAINER	STAINLESS STEEL T304, ASTM A593
36	PIPE PLUG	STEEL

NOTE: ALL SPECIFICATIONS AS
LAST REVISED.

MATERIALS OF CONSTRUCTION

DATE 3/17/00

VAL-MATIC[®] VALVE AND MANUFACTURING CORP.

DRWG. NO.

VM-801A-M