

VAL-MATIC®

COMBINATION AIR VALVES



Exclusive
**STAINLESS STEEL
TRIM-STANDARD**

- ALL S.S. TRIM ELIMINATES DESTRUCTIVE ELECTROLYTIC ACTION WHICH CAN OCCUR WHEN DISSIMILAR METALS SUCH AS S.S. & BRONZE ARE USED TOGETHER

Other Features

- FULL PORTED VALVES—NO RESTRICTIVE AREAS
- STAINLESS STEEL TRIM ASSURES LOW MAINTENANCE
- STAINLESS STEEL FLOATS UNCONDITIONALLY GUARANTEED
- SYNTHETIC SEATING ASSURES DROP TIGHT SEAL AT VERY LOW PRESSURES

FOR:

**High Capacity Venting
Pipeline Protection
Flow Efficiency**



- RUGGED CAST IRON BODY AND COVER
- WORKING PRESSURES UP TO 300 P.S.I.
- COMPLETE INTERCHANGEABILITY OF ALL PARTS
- EASILY MAINTAINED WITHOUT SPECIAL TOOLS

WHY YOU SHOULD USE



COMBINATION AIR VALVES

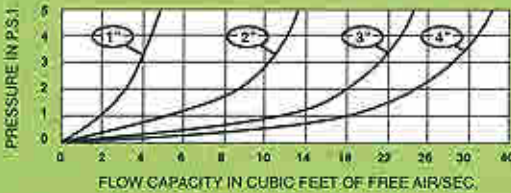
Most piping systems require both Air Release Valves and Air Vacuum Valves to maintain pipeline efficiency and provide pipeline protection. Because of this need, the "Combination Air Valve" was developed.

The Val-Matic Combination Air Valve performs both the functions of Air Release and Air/Vacuum Valves. The Air Release valve portion vents air which accumulates at high points in a

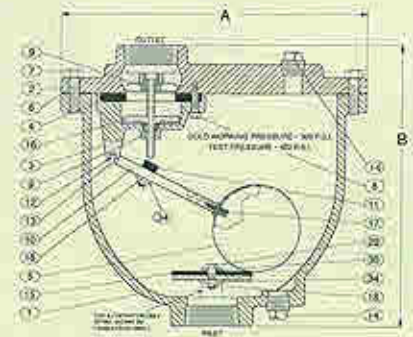
system during its operation. The Air/Vacuum valve portion will exhaust the larger quantities of air present in a system during the filling and allow air to re-enter during draining.

As with all air valves, these should also be installed at each high point in the system to effectively maintain pipeline efficiency and provide pipeline protection. Refer to Val-Matic "Air Valve Calculator" for sizing information.

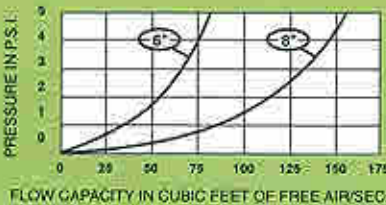
MODEL NO.	AIR/VACUUM INLET X OUTLET N.P.T.	LARGE ORIFICE DIAMETER	AIR RELEASE ORIFICE DIAMETER	MAXIMUM WORKING PRESSURE	HEIGHT	WIDTH	WT. LBS.
201C	1 X 1	1"	5/64"	300 P.S.I.	10 1/2"	11 3/8"	40
202C	2 X 2	2"	3/32"	300 P.S.I.	13"	14"	71
203C	3 X 3	3"	3/32"	300 P.S.I.	17"	16"	120
204C	4 X 4	4"	3/32"	300 P.S.I.	19"	18 1/2"	170



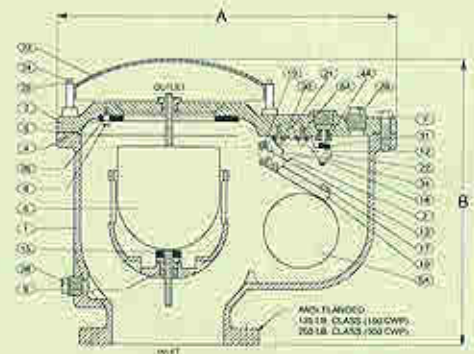
Single Housing Type
1" thru 4" N.P.T. Inlets and Outlets
3"-4" Available W / ANSI Class
125 or 250 Flanged Inlets



MODEL NO.	VALVE SIZE	INLET SIZE	OUTLET SIZE	HEIGHT	WIDTH	ORIFICE SIZE		WT. LBS.
						150 P.S.I.	300 P.S.I.	
206C	6"	6" Flg.	6"	20 1/4"	21"	3/8"	7/32"	225
208C	8"	8" Flg.	8"	23 1/2"	25"	3/8"	7/32"	320



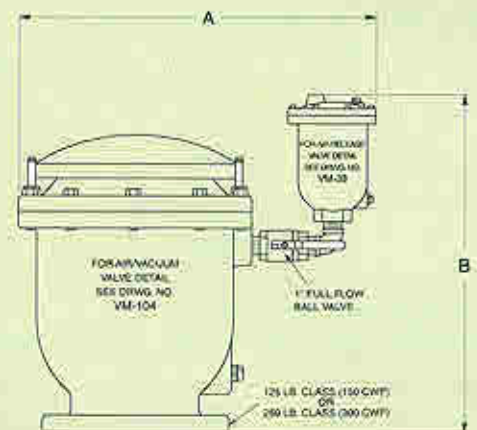
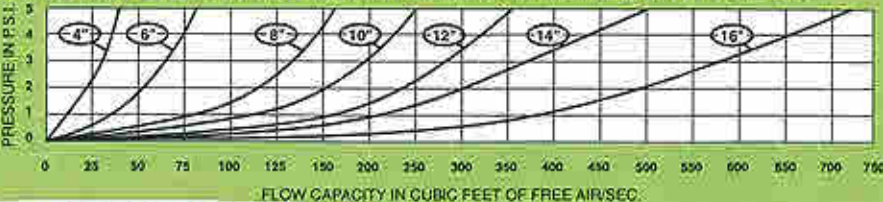
Single Housing Type
6" and 8" ANSI Class
125 or 250 Flanged Inlets



MODEL NO.	*INLET X OUTLET SIZE INCHES	*MAXIMUM WORKING PRESSURE	HEIGHT	WIDTH	WT. LBS.
104/22	4 x 4	150/300 P.S.I.	18"	21"	113
104/38	4 x 4	150/300 P.S.I.	22"	21"	133
106/22	6 x 6	150/300 P.S.I.	21"	24"	160
106/38	6 x 6	150/300 P.S.I.	23"	24"	190
108/38	8 x 8	150/300 P.S.I.	26"	27"	236
110/38	10 x 10	150/300 P.S.I.	28"	30"	398
112/38	12 x 12	150/300 P.S.I.	32"	33"	615
114/38	14 x 14	150/300 P.S.I.	34"	36"	705
116/38	16 x 16	150/300 P.S.I.	34"	39"	903

* Flanged Inlet ANSI Class 125 for 150 P.S.I. & ANSI Class 250 for 300 P.S.I. W.P. Higher working pressures available upon request.

NOTE: Use a 445 valve in place of #38 valve when greater venting capacity is required.



Custom Built Type
4" thru 16" ANSI Class
125 or 250 Flanged Inlet

N.P.T. and Flanged Outlets
Available Upon Request

Contact us for more information:

Valve & Equipment Consultants, Inc.

24116 Yoakum Street • Huffman, Texas 77336

Phone: 281-324-1500 • Fax: 281-324-4595

Email: sales@valveandequipment.com

Website: www.ValveAndEquipment.com